

VISUALIZING BACTERIAL SEQUENCING DATA WITH GENOMEVIEW



Thomas Abeel – tabeel@broadinstitute.org

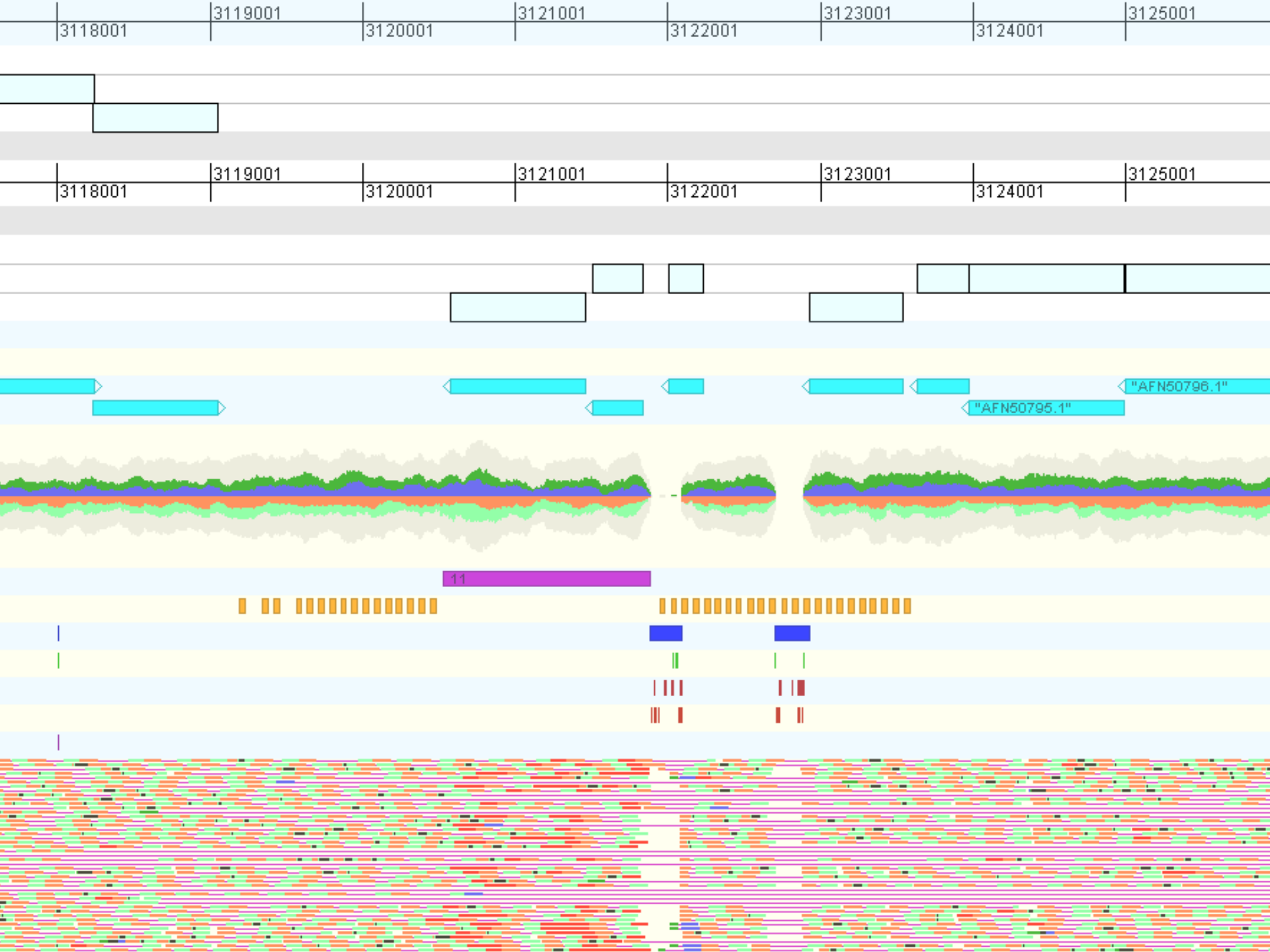
July 19, 2013

GenomeView - BOSC - ISMB 2013 -
tabeel@broadinstitute.org

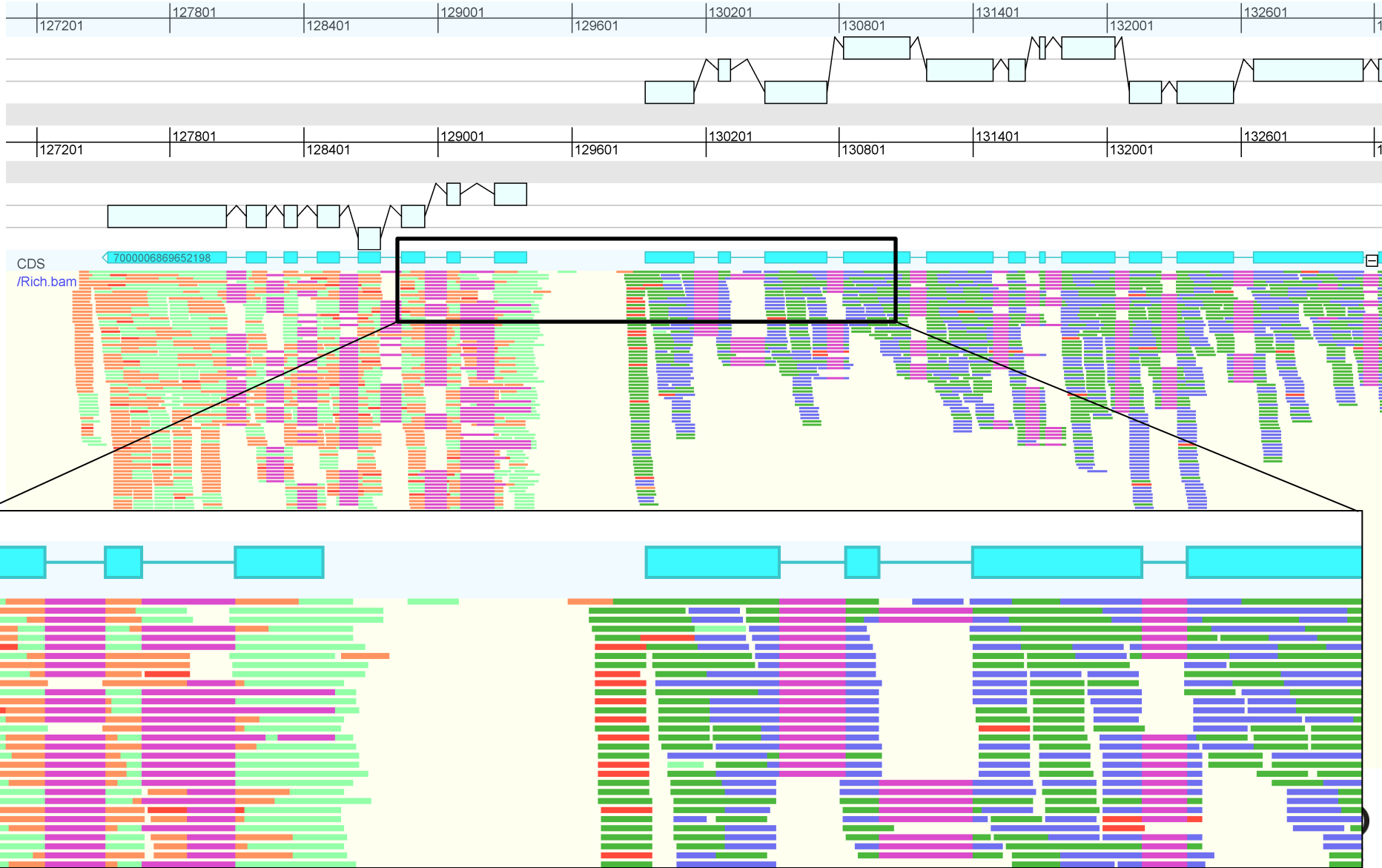
1

Take home message

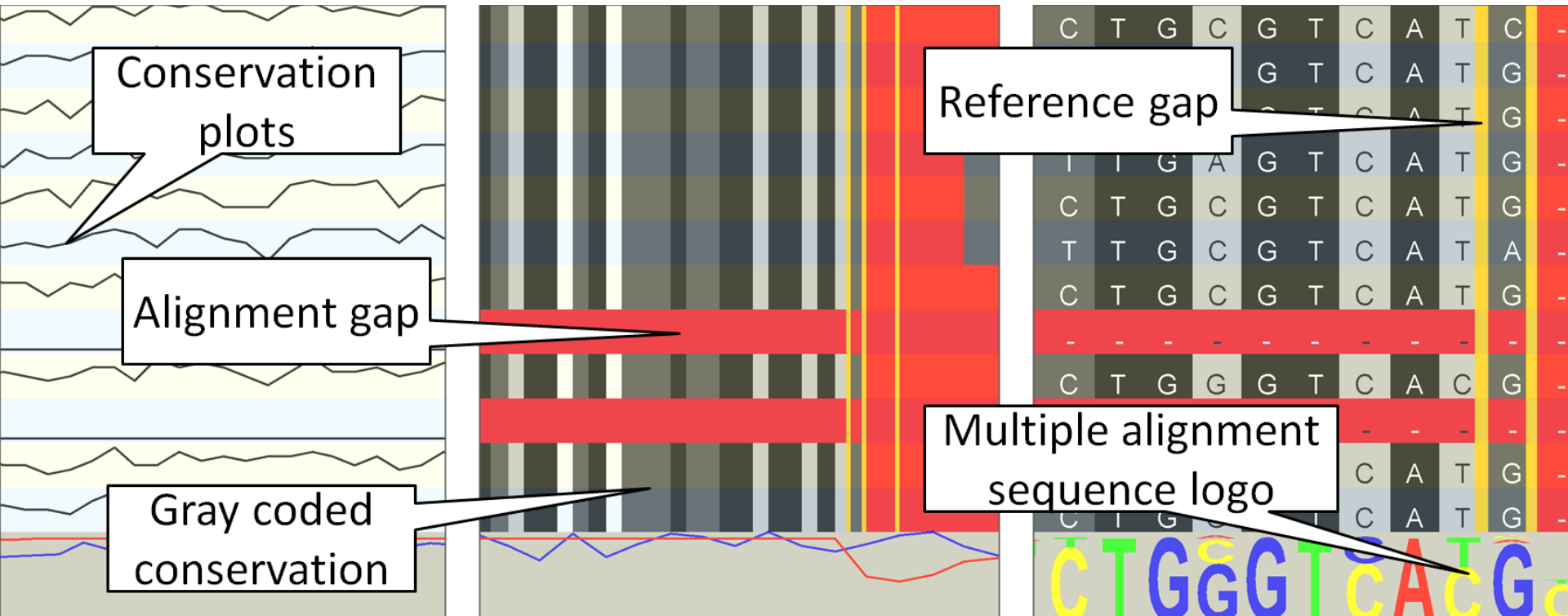
- **Interactive, real-time exploration** of NGS data
- **Rich visualization** of NGS data
- Many other data-types supported
 - Annotations
 - Comparative visualizations, i.e. multiple alignments
- Editor, encryption, authentication
- **Integrate** with existing platforms and data sources
- Configurable and extendable through **plug-ins**



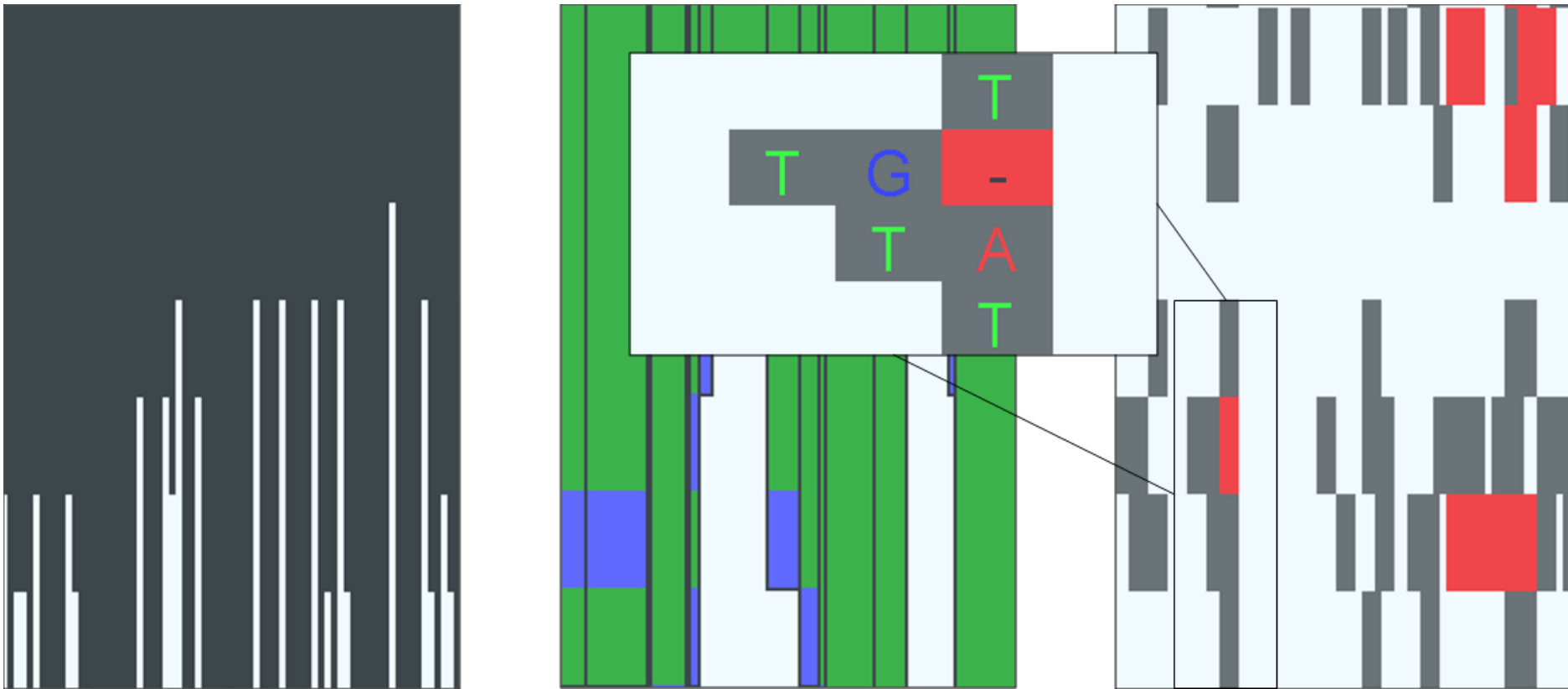
Directional PE RNA-seq



Multiple alignments



Large multiple alignments



<http://www.youtube.com/watch?v=iHvHLUNjBkU>

<http://genomeview.org/screencasts>

Projected annotations

- Show gene annotations from aligned genomes





Acknowledgements

- Thomas Van Parys, Marijn Vandevoorde,
- David Roldán Martínez

T: @GenomeView

W: <http://genomeview.org>



July 19, 2013

GenomeView - BOSC - ISMB 2013 -
tabeel@broadinstitute.org

8

